

1

2600

---

FP



BLR

FE

**EL**



⑤

(H)

FB

© FE CC

Ⓕ ⒼⒼ

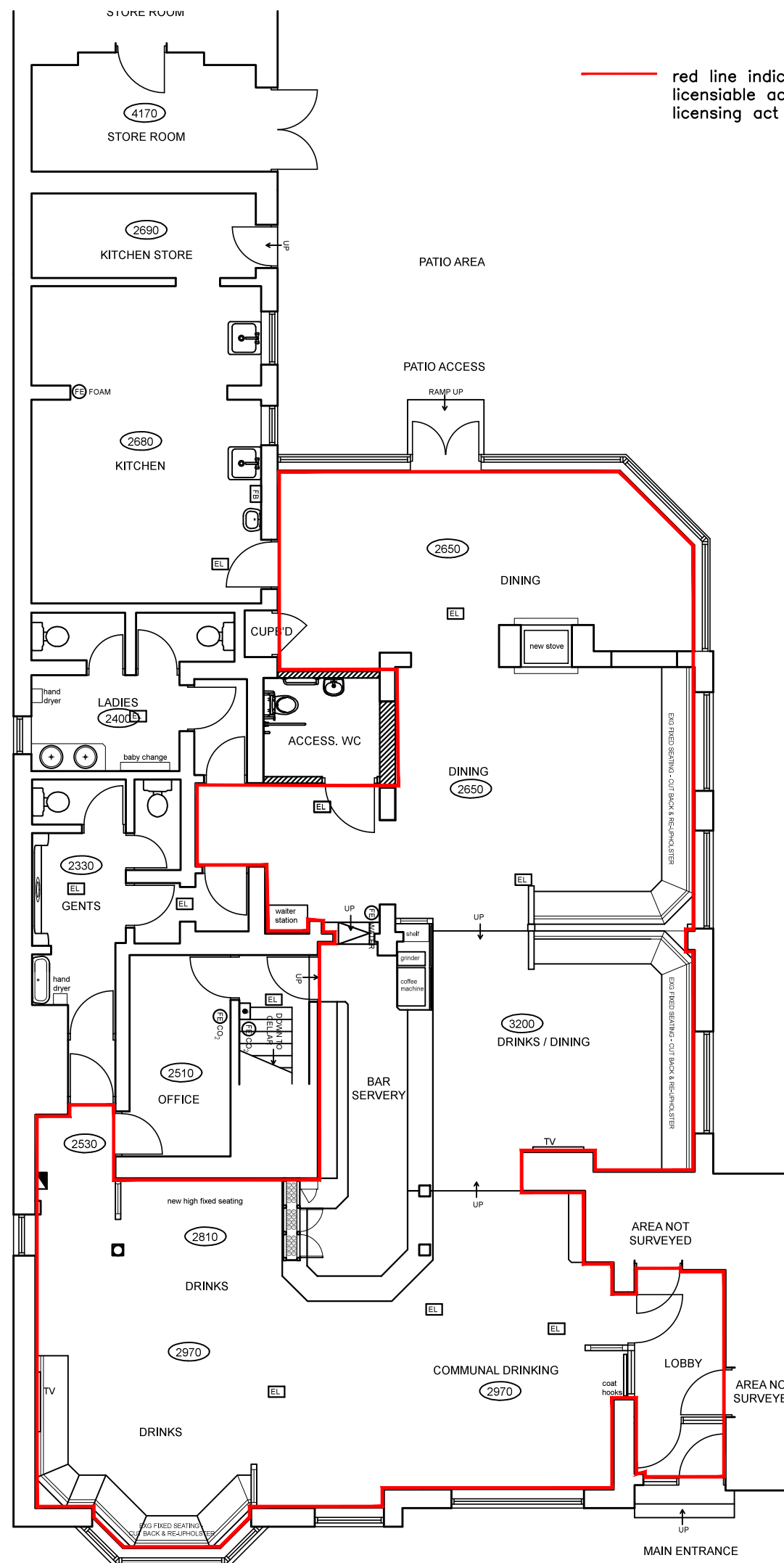
© W.

Ⓢ PC

✱



A diagram of a simple pendulum. It consists of a small circular mass labeled  $m$  at the bottom, connected by a vertical line representing a string of length  $l$  to a horizontal bar at the top. The bar has two small circles representing pivot points.



This drawing, design & all information contained herein remains the sole copyright of CONCORDE DESIGN & reproduction in any form is strictly forbidden unless permission is obtained in writing.

- Do not scale from this drawing, all dimensions must be checked on site. The contractor must verify all site dimensions, drawings, details & specifications. Any discrepancies must be reported to CONCORDE DESIGN prior to any commencement of work.
- Figured dimensions to take preference over those scaled.
- All specified items are to be installed in accordance with the manufacturers recommendations & instructions.

A	07.04.17	Section of fixed seating removed to allow for new accessible toilet cubicle position.	JL	.
rev	date	note	init.	ch.

Stage:	
--------	--

Stage:	
--------	--

Client: \_\_\_\_\_

Client: \_\_\_\_\_

Project:

Project:

Title:
--------

Title:
--------

Scale     1:100	Dwg size:    A3
Drawn:     JL	Date:
Drawing No. <b>3034-07-01</b>	Revision: <b>A</b>

# CONCORDE DESIGN

<b>South Yorkshire</b>	<b>London</b>
Palmer Street	Unit 114
Hyde Park	Screenworks
Doncaster	22 Highbury Grove
DN4 5DD	N5 2EF

<b>South Yorkshire</b>	<b>London</b>
Palmer Street	Unit 114
Hyde Park	Screenworks
Doncaster	22 Highbury Grove
DN4 5DD	N5 2EF

<b>South Yorkshire</b>	<b>London</b>
Palmer Street	Unit 114
Hyde Park	Screenworks
Doncaster	22 Highbury Grove
DN4 5DD	N5 2EF

<b>South Yorkshire</b>	<b>London</b>
Palmer Street	Unit 114
Hyde Park	Screenworks
Doncaster	22 Highbury Grove
DN4 5DD	N5 2EF